

# International Contender World & Australian Open Championships 2010 Brisbane

Australian Open Championship: 3 – 6 January 2010  
World Championship: 7 – 12 January 2010

## SAILING INSTRUCTIONS

Organised and Hosted By:  
Royal Queensland Yacht Squadron



---

## 1. RULES

- 1.1 The regatta will be governed by the rules as defined in the current *The Racing Rules of Sailing (RRS)*.
- 1.2 No national authority prescriptions will apply.
- 1.3 The Equipment Rules of Sailing and the International Contender Championship Rules will apply.
- 1.4 Under rule 86.1(b), in the definition Zone the distance is changed to two hull lengths.
- 1.5 If there is a conflict between languages the English text will take precedence.

## 2. NOTICES TO COMPETITORS

Notices to competitors will be posted on the official notice board located outside the RQYS Marine Sports Office.

## 3. CHANGES TO SAILING INSTRUCTIONS

Any change to the Sailing Instructions will be posted before 1200 hours on the day it will take effect, except that any change to the schedule of races will be posted by 1800 hours on the day before it will take effect.

## 4. SIGNALS MADE ASHORE

- 4.1 Signals made ashore will be displayed on the RQYS Official Flag Pole located outside the RQYS Clubhouse.
- 4.2 When flag AP is displayed ashore '1 minute' is replaced with 'not less than 45 minutes' in the race signal AP definition of the RRS.

## 5. SCHEDULE OF RACES

- 5.1 Attachment 1 details the schedule of race and events.
- 5.2 After a long postponement, to alert boats that a race or sequence of races will begin soon, an orange flag will be displayed with one sound at least four minutes before a warning signal is displayed.
- 5.3 World Championship: On the last day of the regatta no warning signal will be made after 1530 hours.

## 6. CLASS FLAGS

The class flag will be Code Flag C.

## 7. RACING AREAS

Attachment 2 shows the location of the racing areas.

## 8. THE COURSES

- 8.1 The diagram in Attachment 3 shows the courses, including the order in which marks are to be passed and the side on which marks are to be left.
- 8.2 No later than the warning signal, the race committee boat will display the approximate compass bearing of the first leg.

## 9. MARKS

- 9.1 Marks 1, 2 and 3 will be large yellow inflatable buoys.
- 9.2 The starting and finishing marks will be orange/pink teardrop buoys.

## 10. THE START

- 10.1 Races will be started by using rule 26 with the warning signal made five (5) minutes before the starting signal.
- 10.2 The starting line will be between a staff displaying an orange flag on the start boat at the starboard end and the port-end starting mark.
- 10.3 A boat starting later than 10 minutes after her starting signal will be scored Did Not Start without a hearing. This changes rule A4.

---

## 11. CHANGE OF THE NEXT LEG OF THE COURSE

To change the next leg of the course, the race committee will move the original mark (or the finishing line) to a new position.

## 12. THE FINISH

The finishing line will be between a staff displaying an orange flag on the finish boat at the starboard end and the port-end finishing mark.

## 13. PENALTY SYSTEM

13.1 Appendix P will apply.

13.2 (a) When the wind speed exceeds 10 knots the race committee may signal that except on a beat to windward, pumping, rocking and ooching are permitted, as specified in the class rules, by displaying code flag O before or with the warning signal. The flag will be removed at the starting signal.

(b) If the wind speed exceeds 10 knots after the starting signal, the race committee may display code flag O with repetitive sounds at a rounding mark to signal that the actions are permitted, as specified in the class rules, applies to a boat after she has passed the mark.

(c) If the wind speed becomes less than 10 knots after code flag O was displayed, the race committee may display flag R with repetitive sounds at a rounding mark to signal that rule 42, as changed by the class rules, applies to a boat after she has passed the mark.

## 14. TIME LIMITS

14.1 The time limit for each race will be 90 minutes.

14.2 Boats failing to finish within 30 minutes after the first boat sails the course and finishes will be scored Did Not Finish without a hearing. This changes rule 35, A4 and A5.

## 15. PROTESTS AND REQUESTS FOR REDRESS

15.1 Protest forms are available at the race office located at the RQYS Marine Sports office. Protests and requests for redress or reopening shall be delivered there within the appropriate time limit.

The protest time limit is 90 minutes after the last boat has finished the last race of the day.

15.2 Notices will be posted no later than 30 minutes after the protest time limit to inform competitors of hearings in which they are parties or named as witnesses. Hearings will be held in the protest room, located next to the RQYS Marine Sports office beginning at the time posted.

15.3 Notices or protests by the race committee or jury will be posted to inform boats under rule 61.1(b).

15.4 A list of boats that, under instruction 13.1, have been penalised for breaking rule 42 will be posted.

15.5 Breaches of instructions 17, 20, 22, 23 and 24 will not be grounds for protest by a boat. This changes rule 60.1(a). Penalties for these breaches may be less than disqualification if the protest committee so decides. The scoring abbreviation for a discretionary penalty imposed under this instruction will be DPI.

15.6 On the last scheduled day of racing a request for reopening a hearing shall be delivered

(a) within the protest time limit if the requesting party was informed of the decision on the previous day;

(b) no later than 30 minutes after the requesting party was informed of the decision on that day.  
This changes rule 66.

15.7 On the last scheduled day of racing a request for redress based on a protest committee decision shall be delivered no later than 30 minutes after the decision was posted. This changes rule 62.2.

15.8 World Championships: Decisions of the jury will be final as provided in Rule 70.5

---

## 16. SCORING

- 16.1 The Low Point Scoring System of Appendix A will apply.
- 16.2 Four races are required to be completed to constitute a series.
- (a) When fewer than five races have been completed, a boat's series score will be the total of her race scored.
- (b) When from 5 to 8 races have been completed, a boat's series score will be the total of her race scores excluding her worst score.
- (c) When 9 or more races have been completed, a boat's series score will be the total of her race scores excluding her worst two scores.

## 17. SAFETY REGULATIONS

- 17.1 **Sign On and Sign Off:** All boats shall "sign on" before leaving the shore and "sign off" as soon as practical after returning to shore at the completion of the days racing, but no later than the end of the protest time limit. Forms will be available outside the Marine Sports Office.
- 17.2 A boat that retires from a race shall notify the race committee as soon as possible.
- 17.3 It is recommended that footwear be worn at all times, but in particular when launching and recovering boats on ramps and beaches.

## 18. REPLACEMENT OF CREW OR EQUIPMENT

- 18.1 Substitution of skippers will not be allowed.
- 18.2 Substitution of equipment will not be allowed unless authorised by the race committee. Requests for substitution shall be made to the committee at the first reasonable opportunity.

## 19. EQUIPMENT AND MEASUREMENT CHECKS

A boat or equipment may be inspected at any time for compliance with the class rules and sailing instructions. On the water, a boat can be instructed by a race committee equipment inspector or measurer to proceed immediately to a designated area for inspection.

## 20. REGATTA SPONSORED ADVERTISING

Boats shall display advertising supplied by the organising authority as follows:  
Toll and Pacific National bow stickers shall be placed

## 21. OFFICIAL BOATS

- 21.1 Official boats will be marked with white flags showing the letter RC in black.
- 21.2 Jury boats will be marked with white flags showing the letter J in black.

## 22. SUPPORT BOATS

- 22.1 Team leaders, coaches and other support personnel shall stay at least 50 meters outside areas where boats are racing from the time of the preparatory signal until all boats have finished or retired or the race committee signals a postponement, general recall or abandonment.
- 22.2 Support boats shall be marked with a white flag displaying a number in black. Support boats are required to register with the RQYS Marine Sports office to acquire a flag and supply the skippers details, boats call sign, contact number and competitor they are representing.

## 23. TRASH DISPOSAL

Boats shall not put trash in the water. Trash may be placed aboard support and race committee boats.

## 24. RADIO COMMUNICATION

Except in an emergency, a boat shall neither make radio transmissions while racing nor receive radio communications not available to all boats. This restriction also applies to mobile telephones.

---

## 25. PRIZES

### 25.1 Australian Open Championship

Australian Open Champion (any nationality)

The Australian Champion must be an Australian Citizen

The first 3 places (any nationality)

Prizes will also be awarded to the 1st Junior (under 21), Master (50 plus) and top female Australian sailor.

### 25.2 World Championship

The winner will obtain the title "2010 International Contender Class World Champion", and will be awarded the International Contender World Champion Perpetual Trophy.

The first, second and third placed skipper will obtain a gold, silver and bronze medal, respectively.

Prizes will also be awarded to the 1st Junior, Master and Female in accordance with International Contender Championship Rule B10.

There will be prizes for the top 10% highest ranked skippers in the series.

## 26. DISCLAIMER OF LIABILITY

Competitors participate in the regatta entirely at their own risk. See rule 4, Decision to Race. The organising authority will not accept any liability for material damage or personal injury or death sustained in conjunction with or prior to, during, or after the regatta.

## 27. INSURANCE

Each participating boat shall be insured with valid third-party liability insurance with a minimum cover of \$5m per event or equivalent.

## 28. TELEVISION AND MEDIA

Attendance at a media/press conference each day may be required for the top three competitors as well as individual heat winners. Suitable notification will be given.

## 29. RIGHTS TO USE NAME AND LIKENESS

By participation in an event, a competitor automatically grants to the Organising Authority and the sponsors of the event, the right in perpetuity, to make, use and show, from time to time and at the discretion, any motion pictures, still pictures and live, taped or film television and other reproductions of him/her during the period of the competition for said event in which the competitor participated and in all material related to the said event without compensation.

## 30. CHARTERED OR LOANED BOATS

A boat chartered or loaned for the event may carry national letter or sail number in contravention of her class rules.

# ATTACHMENT 1

## Schedule of Races and Events

Australian Championship			
Date	Event	Time	Warning Signal
Sunday 3 January	Registration and Measurement	0900 to 1600	
Monday 4 January	Australian AGM	0900	
	Race 1 & Race 2		1400
Tuesday 5 January	Race 3 & Race 4		1400
Wednesday 6 January	Race 5 & Race 6		1400
	Presentation of Trophies	ASAP after Racing	
World Championship			
Date	Event	Time	Warning Signal
Sunday 3 January	Measurement	0900 to 1600	
Thursday 7 January	Registration and Measurement	0900 to 1600	
	Welcome Function	1830	
Friday 8 January	Race 1 & Race 2		1400
Saturday 9 January	Race 3 & Race 4		1400
	Contender Reunion	TBA	
Sunday 10 January	Race 5 & Race 6		1400
Monday 11 January	World AGM	1000	
	Race 7 & Race 8		1400
Tuesday 12 January	Race 9 & Race 10		1300 <i>This amends the NOR 5</i>
	Presentation of Trophies	1900	

# Attachment 2

## Course Area(s)

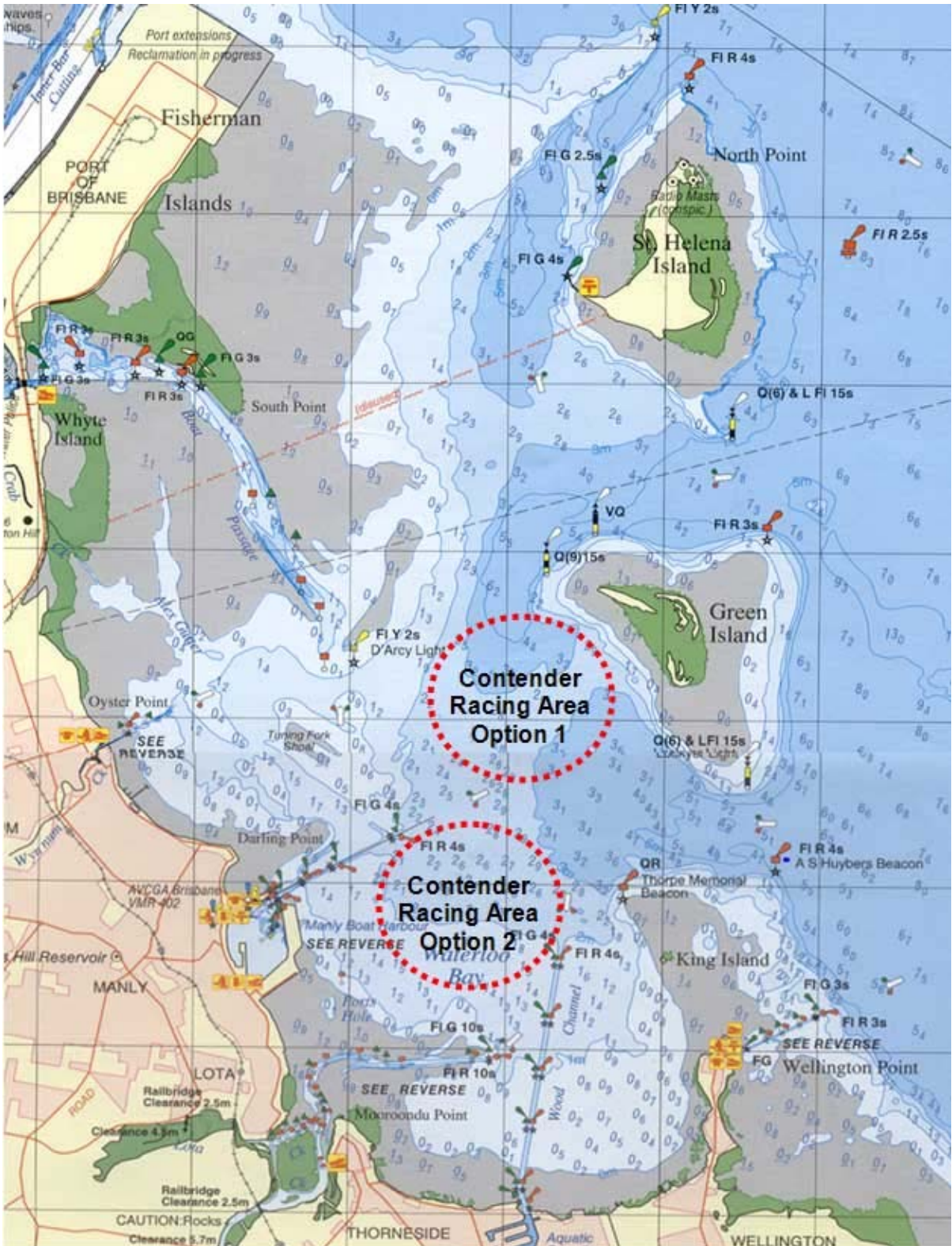


Diagram is approximate and not to scale

---

# ATTACHMENT 3

Mark round order:

Start – 1 – 2 – 3 – 1 – 3 – Finish

Rounding marks are to be passed to port

